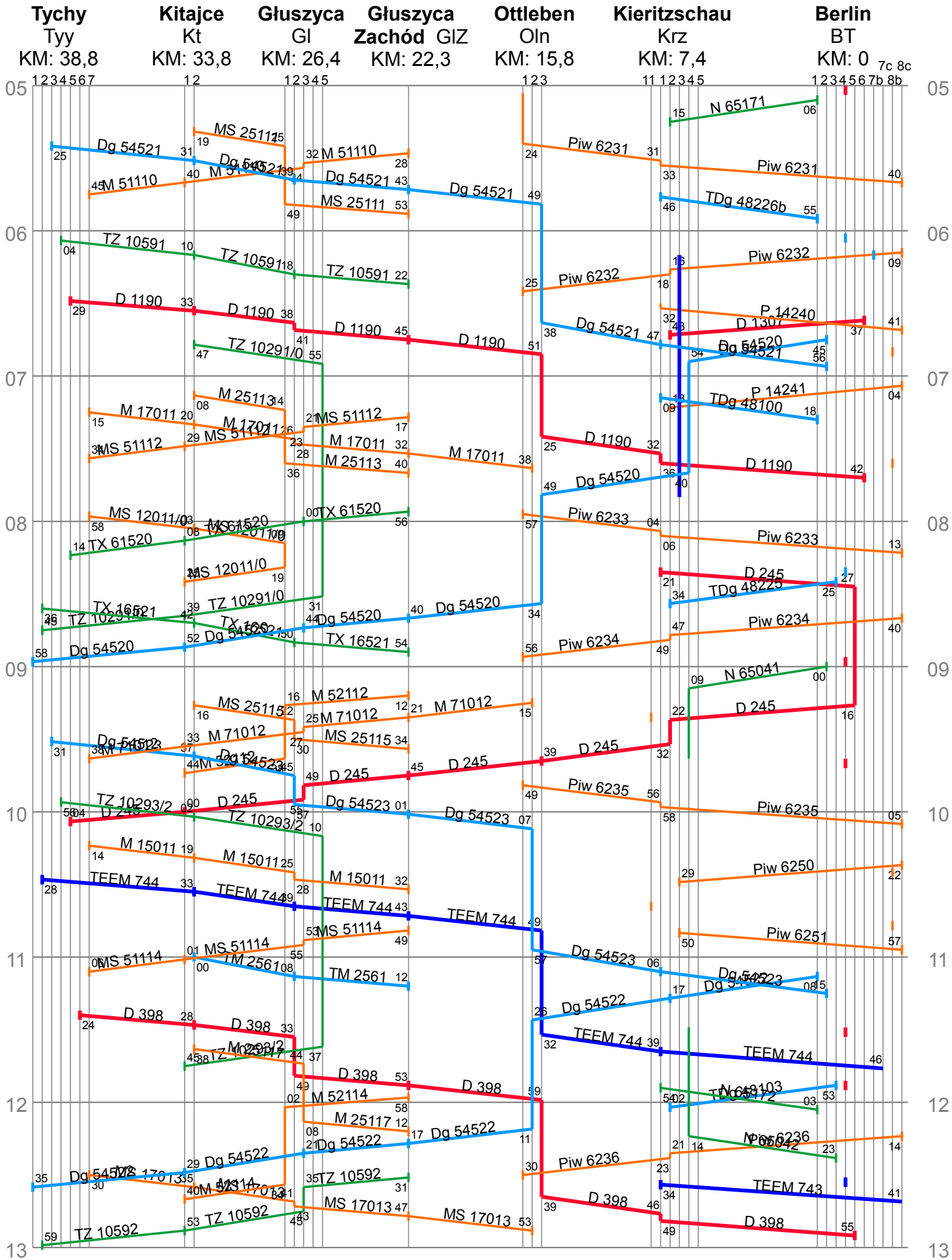


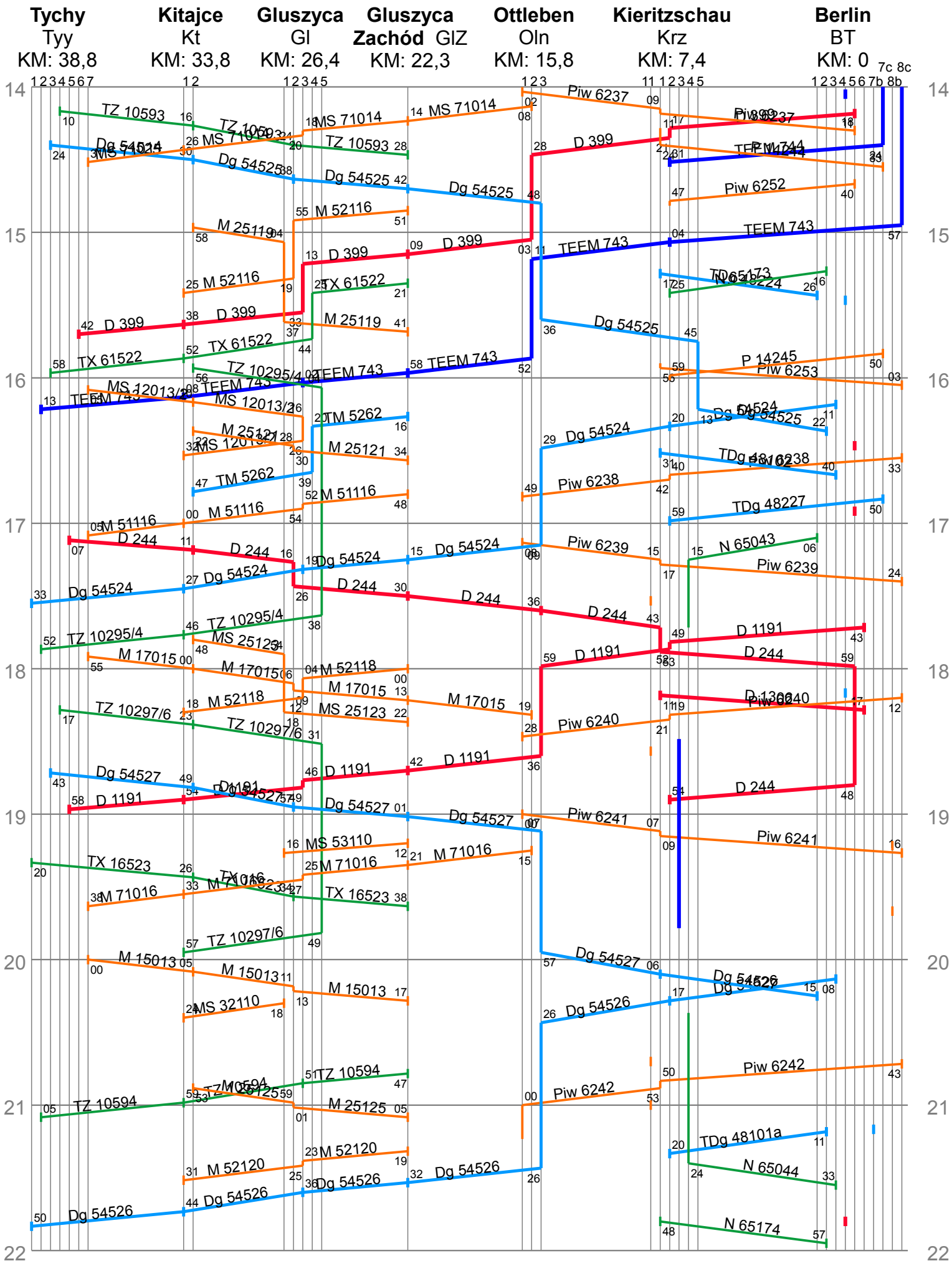




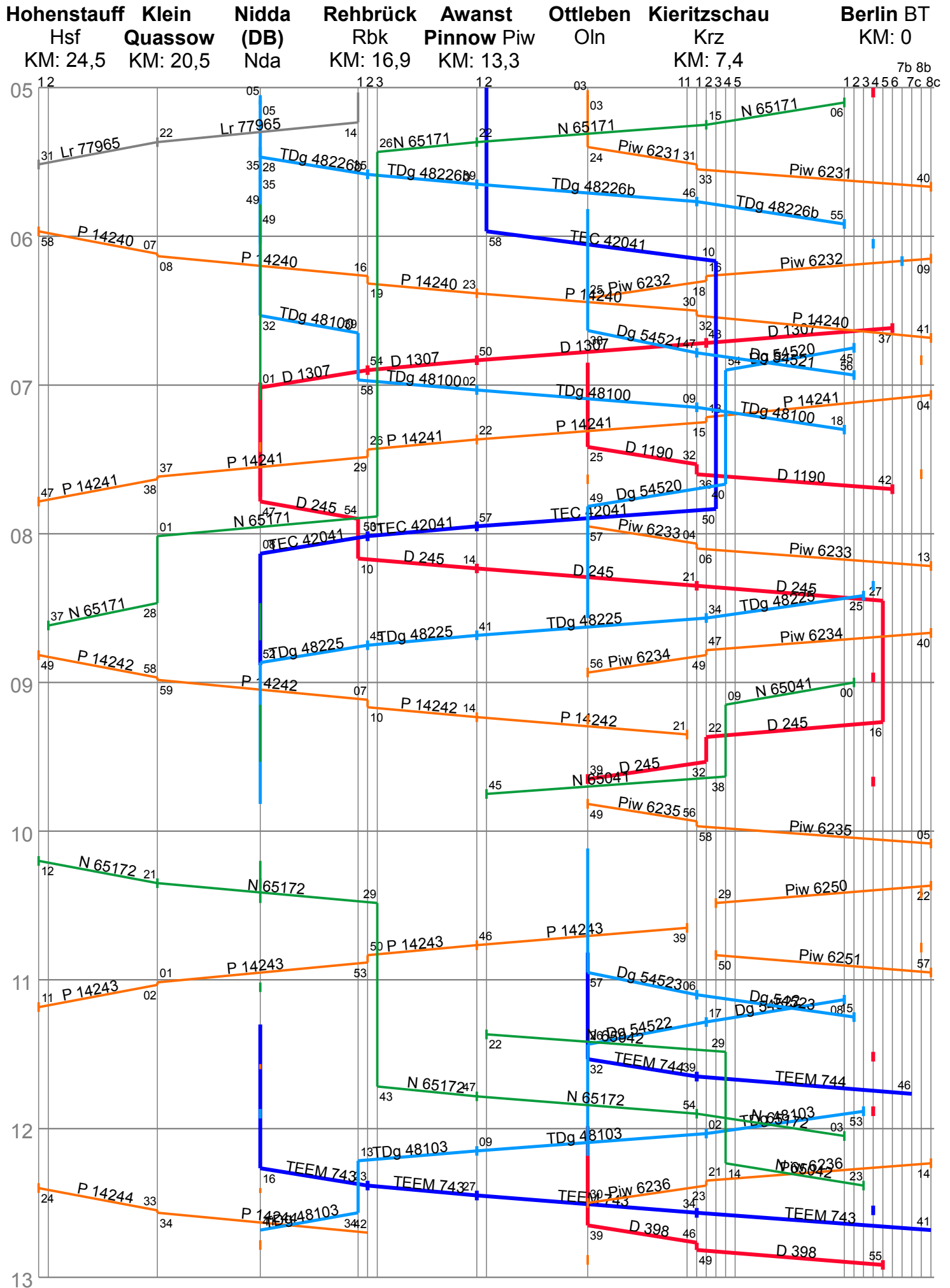
# PKP-DR: Tychy–Głuszyca–Ottleben–Berlin (Morning)



# PKP-DR: Tychy–Głuszyca–Ottleben–Berlin (Afternoon)

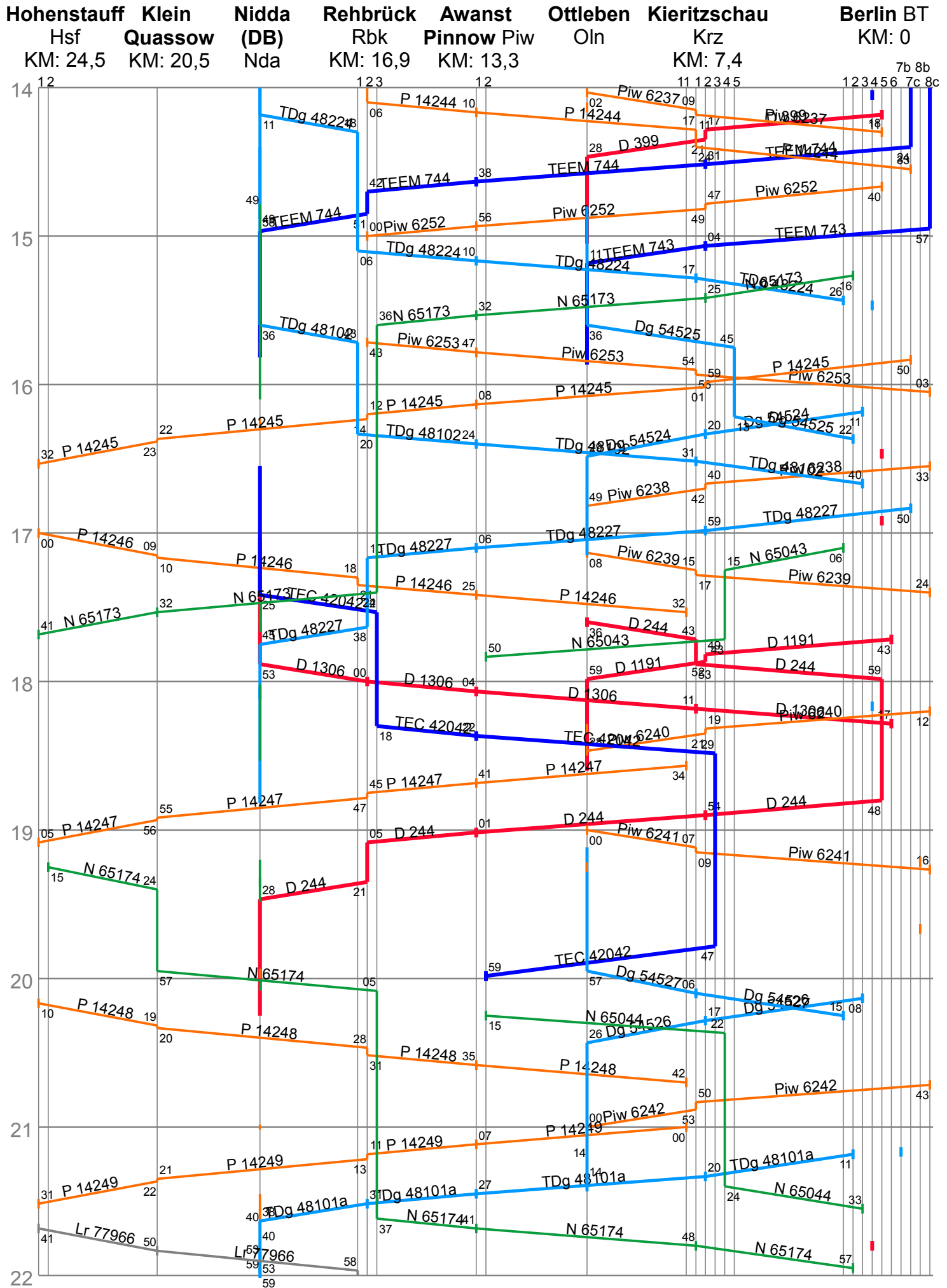


# DR: Hohenstauff-/Nidda-/Ottleben-Berlin (Morning)

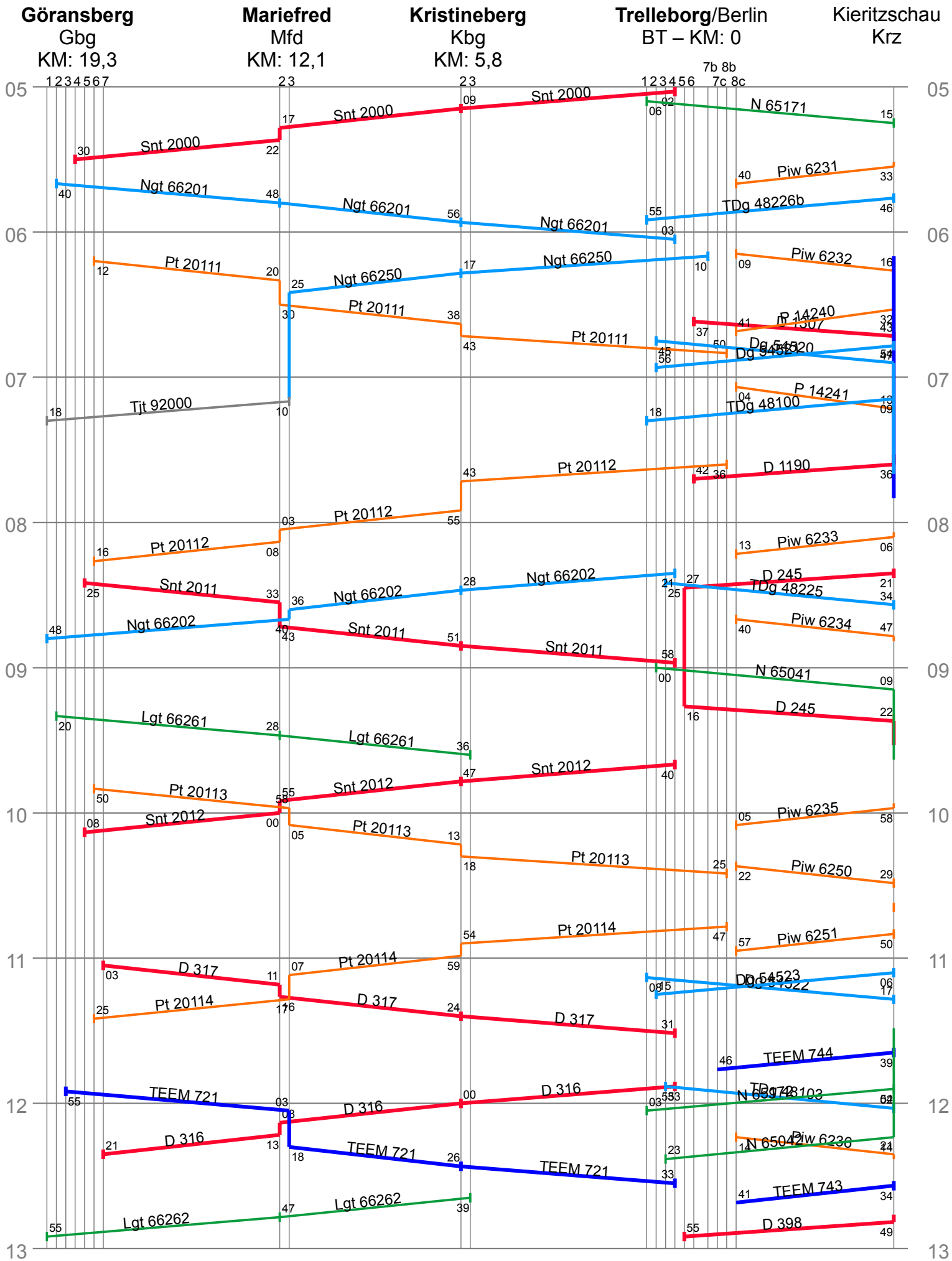




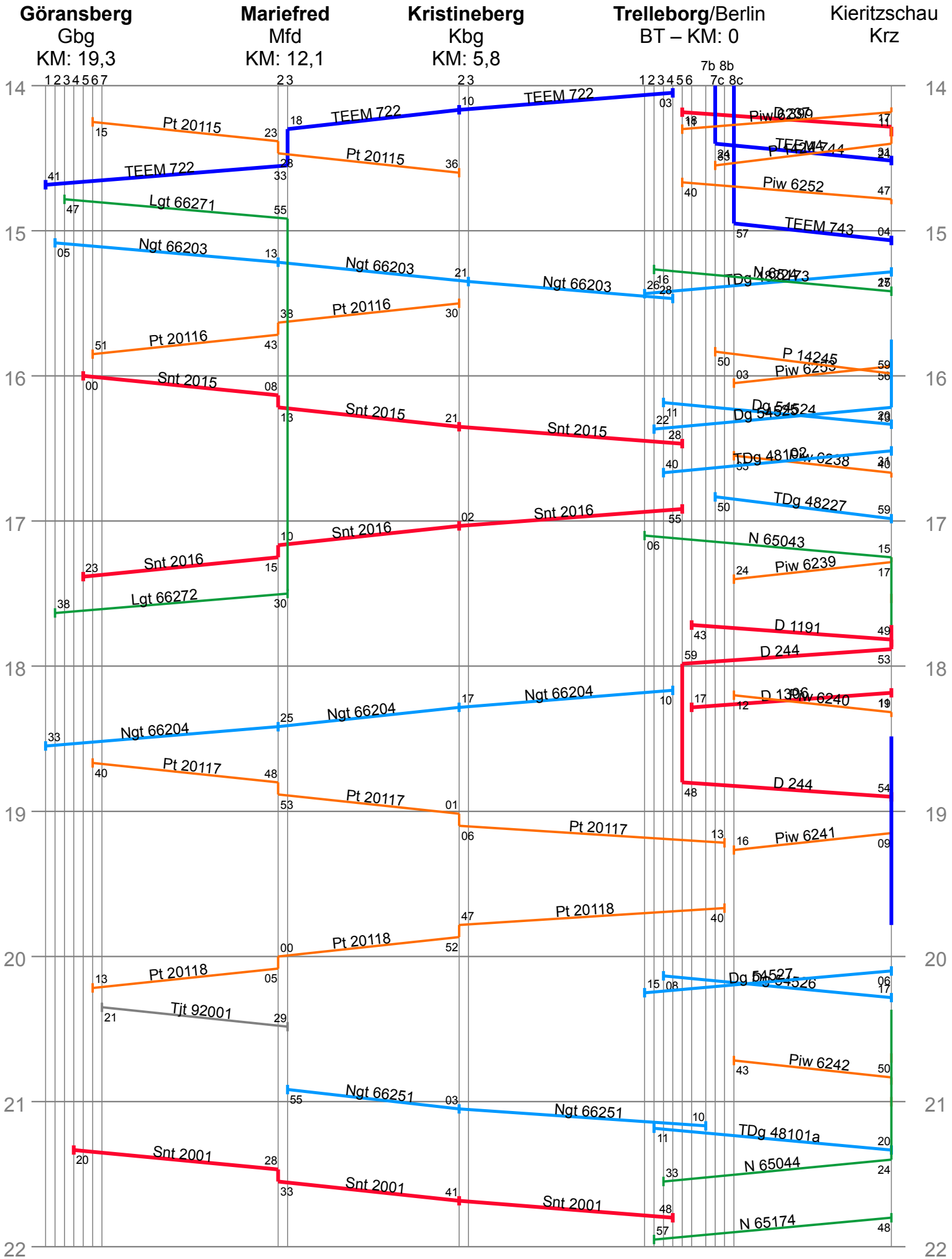
# DR: Hohenstauff-/Nidda-/Ottleben-Berlin (Afternoon)



# SJ: Göransberg–Trelleborg (Morning)

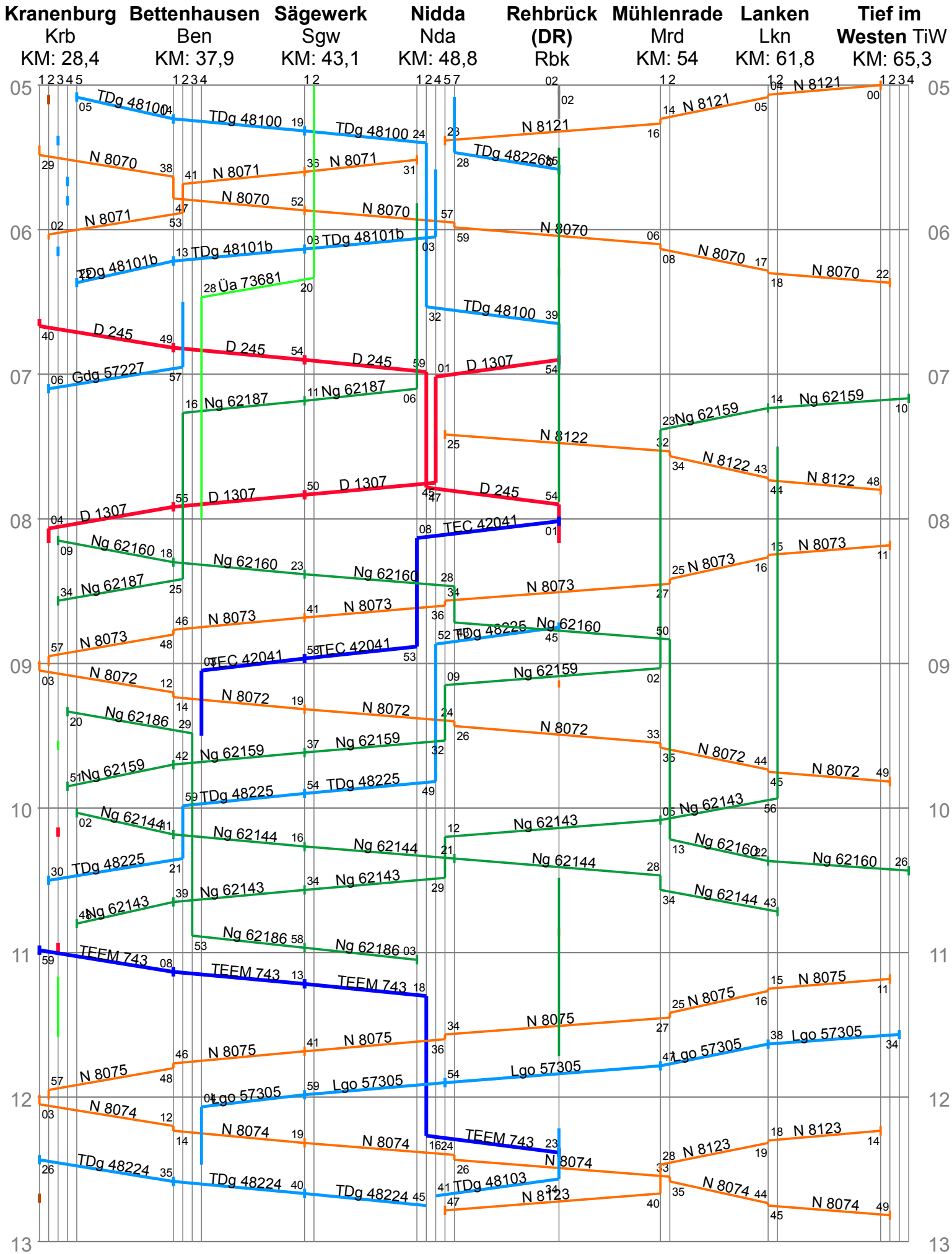


# SJ: Göransberg–Trelleborg (Afternoon)

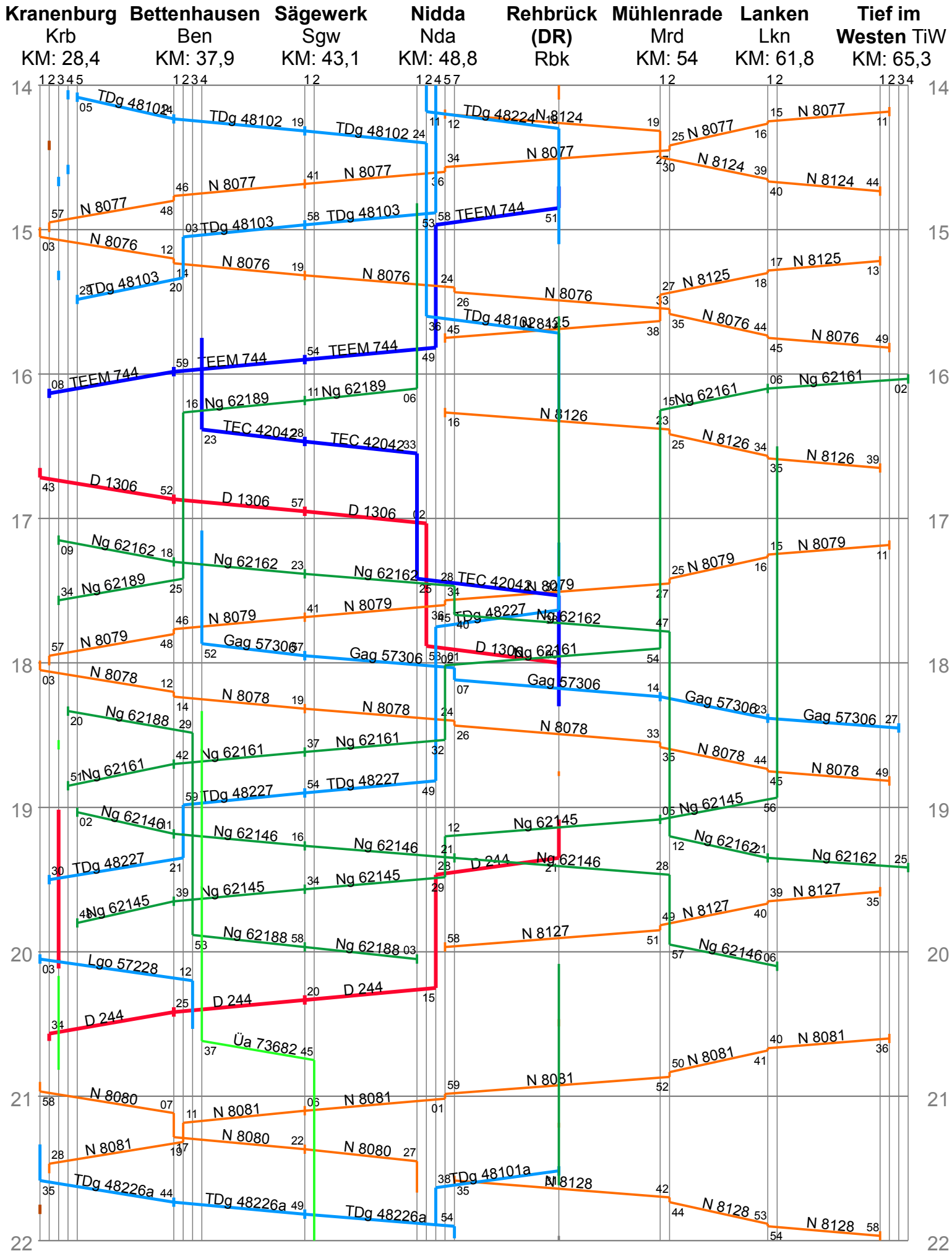




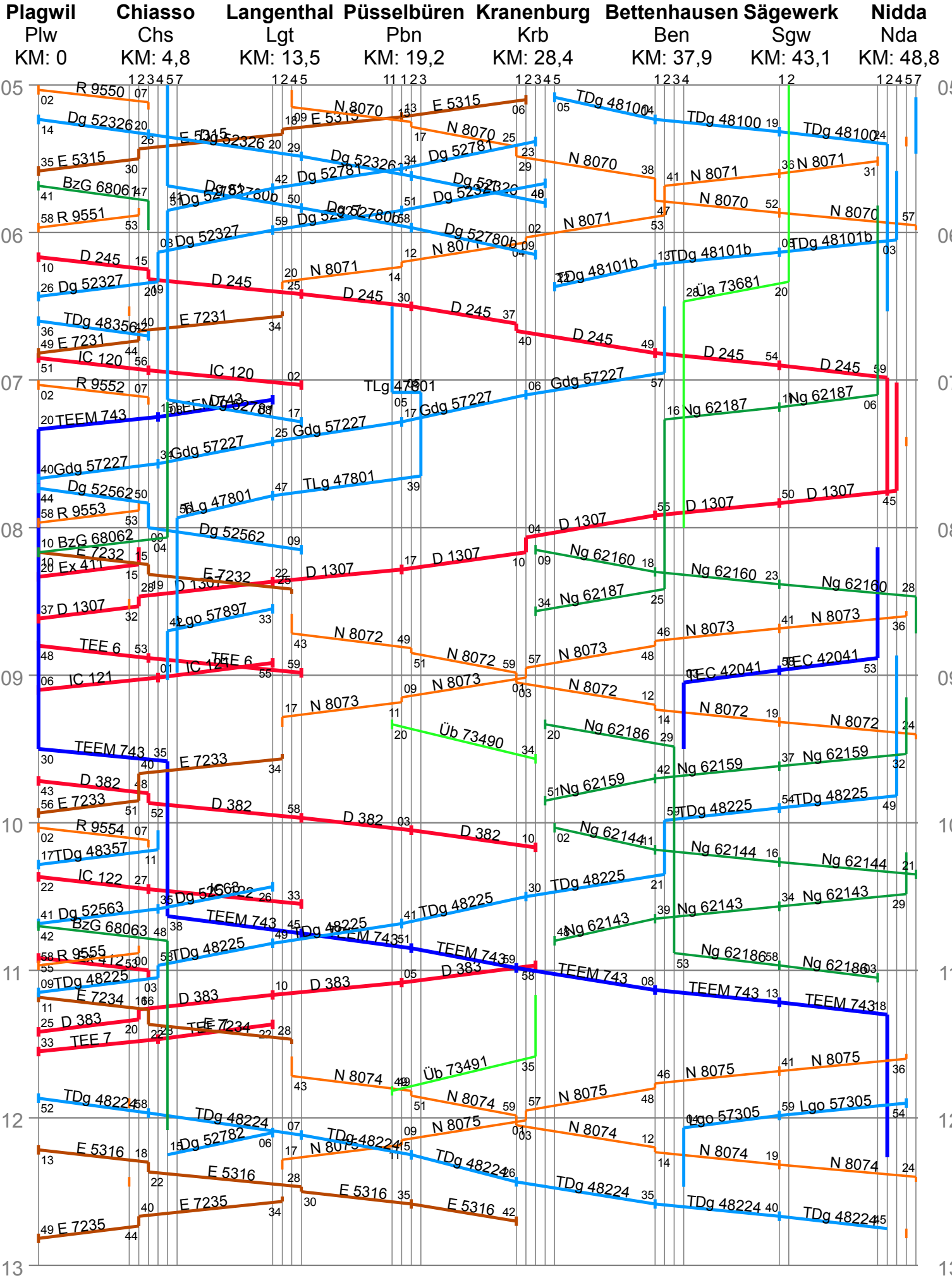
# DB: Kranenburg–Nidda–Rehbrück/–Tief im Westen (Morning)



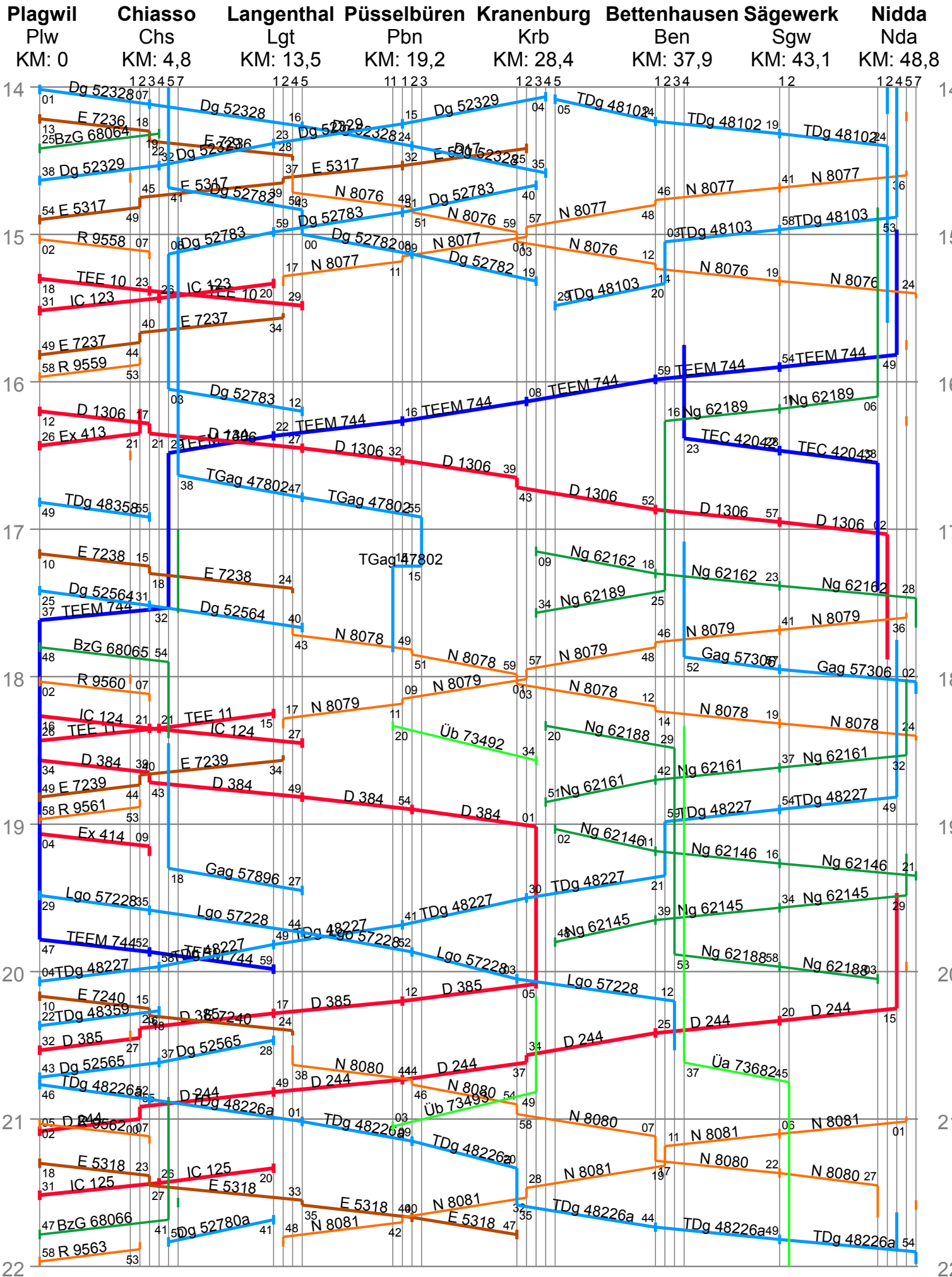
# DB: Kranenburg–Nidda–Rehbrück/–Tief im Westen (Afternoon)



# SBB-DB: Plagwil–Kranenburg–Nidda (Morning)



# SBB-DB: Plagwil–Kranenburg–Nidda (Afternoon)



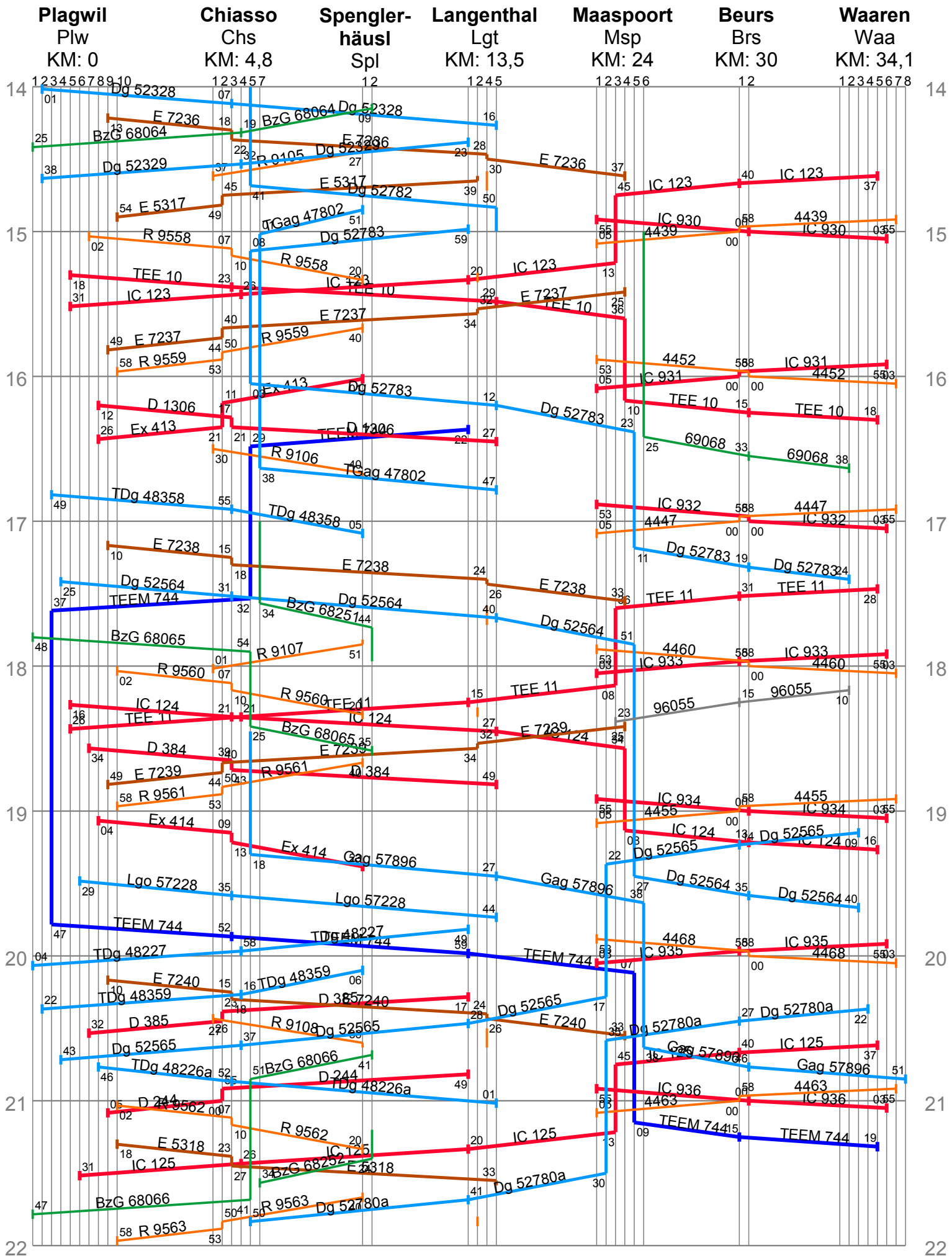


# Electric: Plagwil–Spenglerhäusli/–Maaspoort–Waaren (Morning)



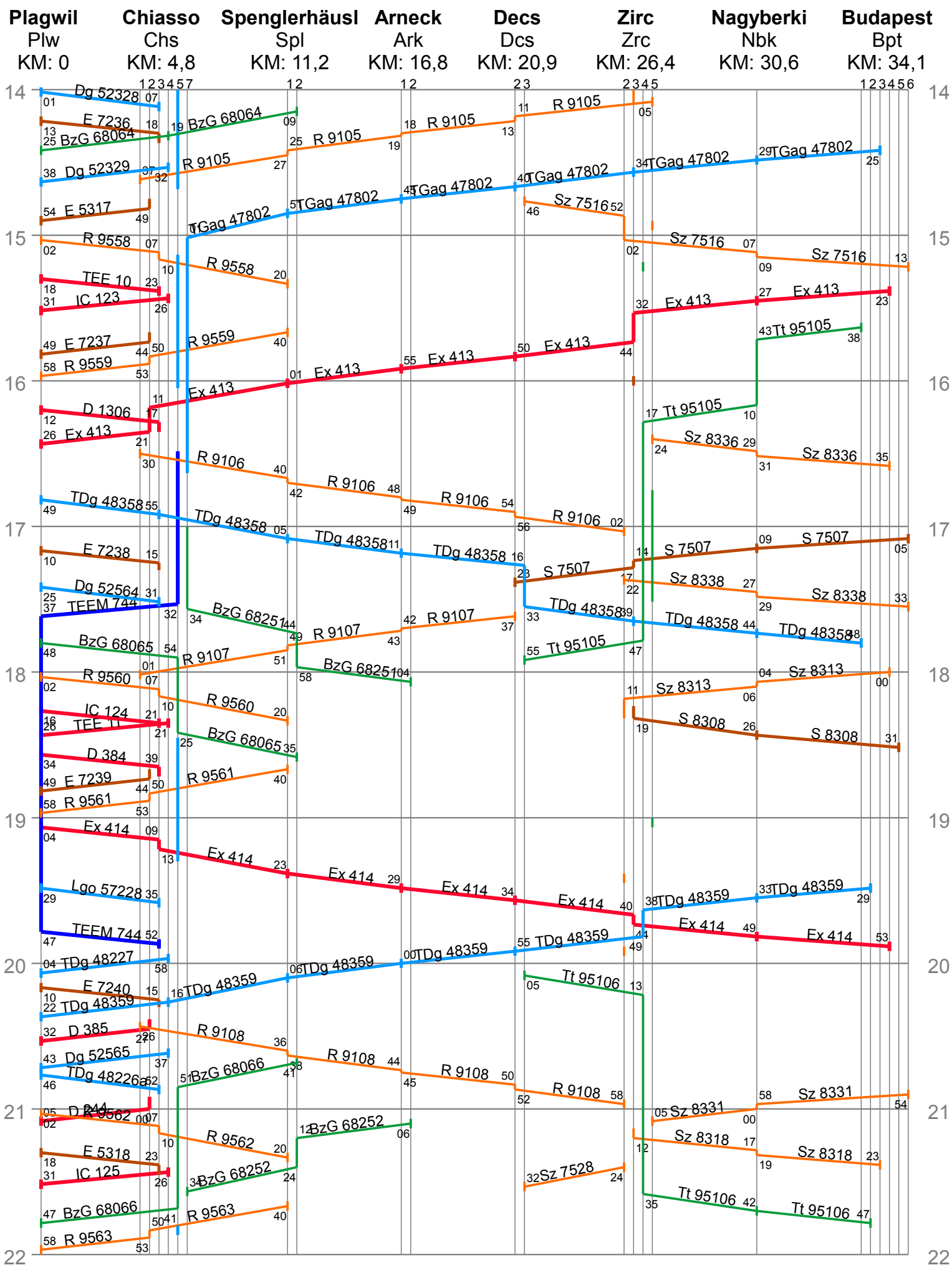


# Electric: Plagwil–Spenglerhäusl/–Maaspoort–Waaren (Afternoon)



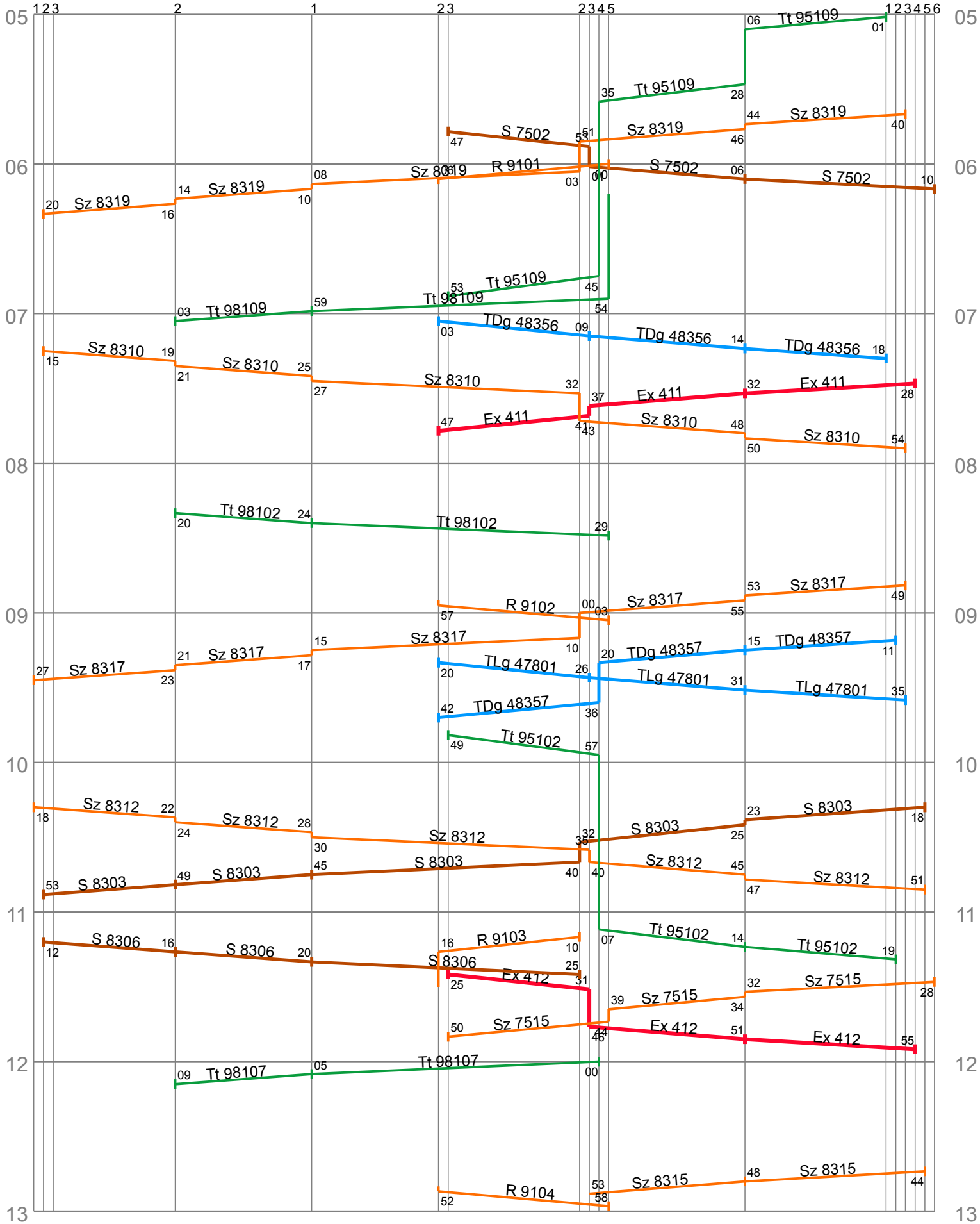


# SBB-ÖBB-MÁV: Plagwil–Chiasso–Zirc–Budapest (Afternoon)



# MÁV: Királyrét–/Decs–Zirc–Budapest (Morning)

Királyrét Kly KM: 17	Tolmács Tm KM: 19,9	Magyarszer- dahely Msh KM: 22,8	Decs Dcs	Zirc Zrc KM: 26,4	Nagyberki Nbk KM: 30,6	Budapest Bpt KM: 34,1
----------------------------	---------------------------	---------------------------------------	-------------	-------------------------	------------------------------	-----------------------------



# MÁV: Királyrét–/Decs–Zirc–Budapest (Afternoon)

<b>Királyrét</b> Kly KM: 17	<b>Tolmács</b> Tm KM: 19,9	<b>Magyarszer- dahely</b> Msh KM: 22,8	<b>Decs</b> Dcs	<b>Zirc</b> Zrc KM: 26,4	<b>Nagyberki</b> Nbk KM: 30,6	<b>Budapest</b> Bpt KM: 34,1
-----------------------------------	----------------------------------	---	--------------------	--------------------------------	-------------------------------------	------------------------------------

